

Ines Kaps, 49 (Chapter North, DE)

My multicultural DNA

Austrian Heritage

I love and miss food and mountains the most. The waltz at midnight at Sylvester is a given.



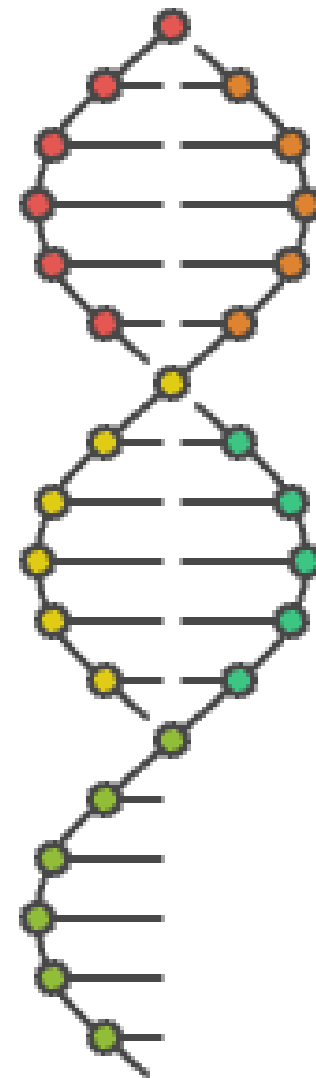
Swiss Marriage

My clock is 2-3 minutes early. Raclette basics are always in the fridge - even in Hamburg.



Cross-Cultural Collaboration

My professional engagements spanned from Japan, China to Turkey, Israel, Europe and the USA.



German Residence

The openness of Hamburg and the business opportunities are captivating.



International Education

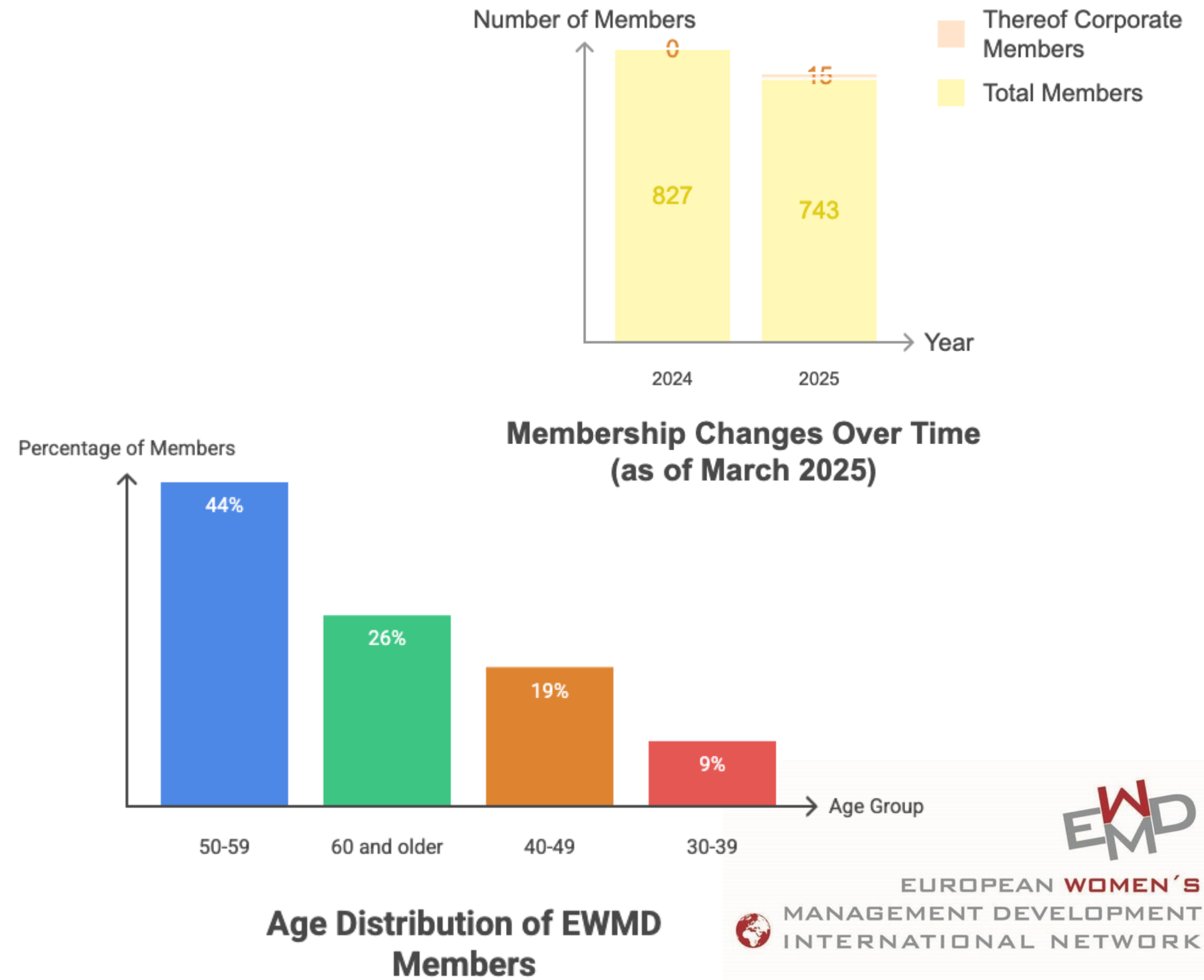
France and UK were incredible years of growth and development.



Stop the Bleeding. Build the Bridges. Shape EWMD's Next Chapter.

EWMD stands at a turning point.
Spain and Turkey are thriving — while
core chapters lose individual and
corporate members fast.
We can't grow if we don't first stop the
decline.
The solution isn't more structure —

2 **it's more connection.**



Growth does not start with numbers – It starts with connections.

My **Vision** is based on three collaborative pillars:

💡 **Sister Chapter Partnerships:** Learn, mentor, and grow together across borders.

🔍 **Network Intelligence Activation:** Reveal and leverage the hidden expertise of 743 members across 15 countries.

🤝 **Corporate Value Reframe:** Shift diversity from compliance to competitive advantage — a driver for innovation and growth.

“Diversity isn’t an end — it’s the means to sustainable growth and innovation.”



For more details:

Scan me



What does EWMD mean to me?

To me, **EWMD is a space of growth, connection, and shared impact** — a community where women support each other to lead with strength and authenticity.

I've had the privilege to experience EWMD from multiple perspectives:
As part of the **Agile Leadership Team** in Hamburg (Chapter North, Germany)
On the **International Conference Team** in Madrid
And within the **International Board**, serving as **National Representative of Germany**

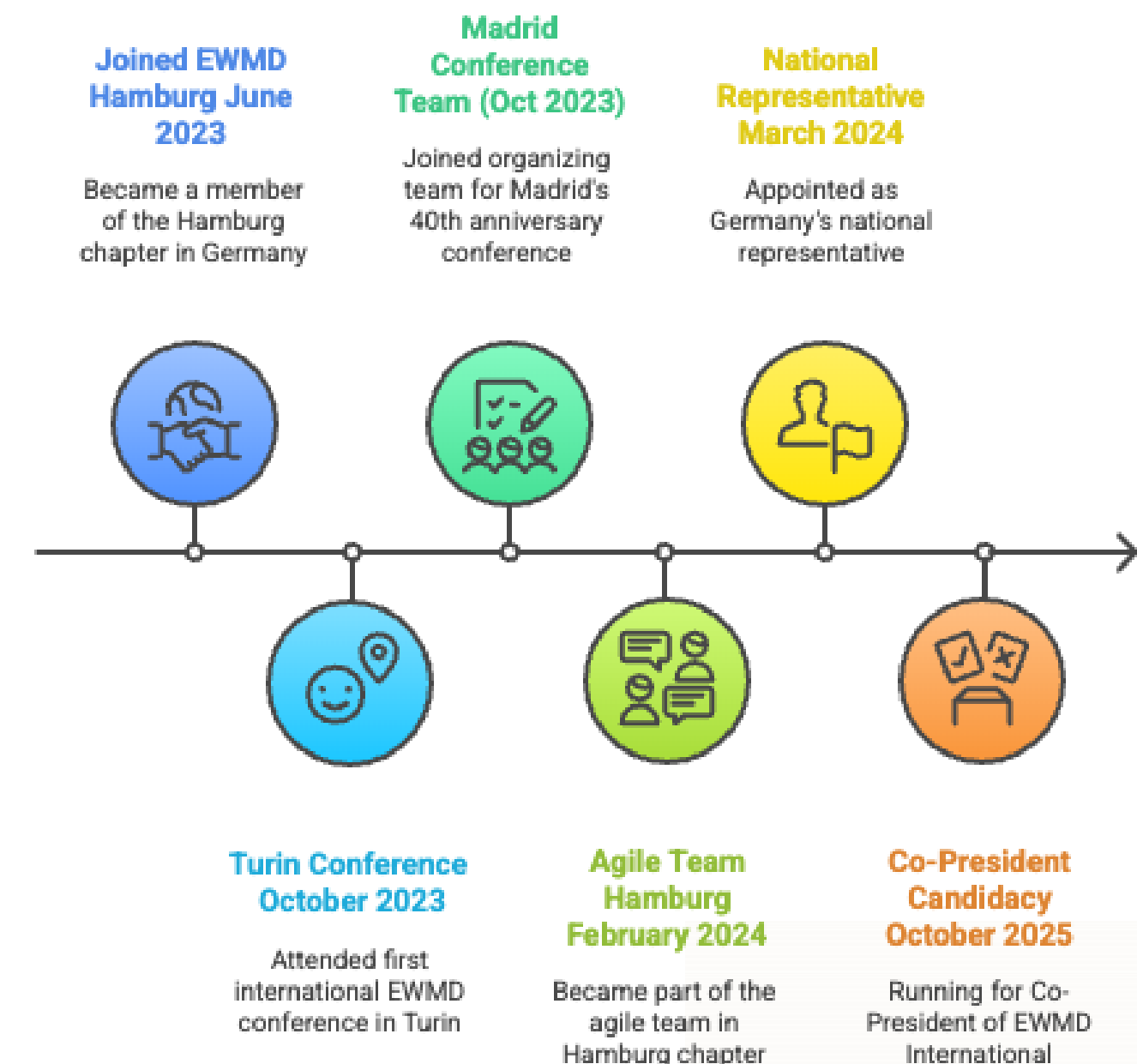
What has moved me most are the moments of true connection — when EWMD women open up about their journeys, their transformations, their challenges and successes.

Those are the moments where our values come alive: **from us – for us.**

This is EWMD's greatest strength — the collective wisdom of our members.

When we unite this experience, our ideas, and our energy across chapters, we have the power to shape **our next chapter — together.**

My EWMD Journey



Why me?

For 23 years, I've led complex international transformations — always where projects were at risk and people needed alignment.

- **Daiichi Sankyo – Global IT Launch:** Turned a stalled roll-out into the company's fastest global implementation in history: Globally aligned Quality & IT Processes.
- **MAN Energy Solutions:** United 56 IT leaders across continents through structured facilitation: Significant cost savings and agile leadership.
- **Entrepreneurship:** Founded and led five companies — I understand both corporate governance and business agility: Innovations implemented.

I bring a blend of **strategic thinking**, **execution excellence**, and **human-centered leadership** to everything I do.

EWMD already has everything it needs to grow again: experience, intelligence, and influence.

EWMD's future depends on what we do now.

Together, we can turn decline into renewal — by **connecting** chapters, **sharing** knowledge, and **transforming** our international diversity into a competitive advantage.

Spain-Turkey collaboration proves it works.

I bring the energy, the experience, and the collaborative mindset to lead this change.



Do you want to know more?

I have created a **short video** on a landing page, where I share more details.

https://pages.kaps.consulting/EWMD_IB_INESKAPS



Scan me

